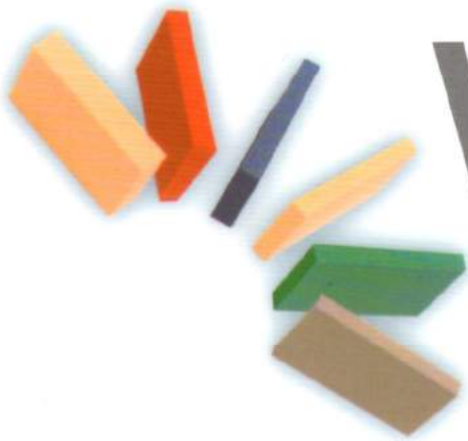




WINBOSS® WORLD





Flotation



Insulation and cushioning



Sound absorption



Shock absorption

	UNITS	TEST METHOD	KNV-201S	KNV-202C	NV-403S	NV-402C	AP-702C	TAPE	NV-904S	NV-904C	NV-404C	VS-100
Standard Sheet Size	in cm		56 x 84 142 x 213	56 x 84 142 x 213	56 x 84 142 x 213	56 x 84 142 x 213	48 x 72 120 x 182	42 x 72 106 x 182	36 x 54 91 x 137	36 x 72 91 x 137	44 x 56 110 x 142	36 x 4 91 x 12
Standard Roll Width	in cm			56 142		56 142	48/56 120/142	42 106		36 91	44 110	
Max. Gauge	in mm		3 76	3 76	1.25 30	1.25 30	1.25 30	0.25 7	1.125 28	1 25	1.5 38	1.625 40
Color (*:other colors available)			Nat	Nat	Nat/Blk	Nat/Blk	Blk*	Blk	Blk*	Net/Blk	Brown*	Blk
Density (P.C.F)	lb/ft3 g/cm3		2.0-3.0 0.03-0.05	2.5-3.8 0.04-0.06	3.5-5.0 0.06-0.08	3.0-4.5 0.05-0.07	3.5-5.0 0.06-0.08	5.5-7.0 0.09-0.12	7.5-9.5 0.12-0.15	7.5-9.5 0.12-0.15	3.5-5.5 0.06-0.09	3.5-5.0 0.06-0.08
Compression Deflection (25%,Psi)	lb/in2 kg/cm2	ASTM D1056	1.0-2.0 0.07-0.14	1.0-2.0 0.07-0.14	2.0-4.0 0.14-0.28	1.5-4.0 0.11-0.28	1.5-4.0 0.11-0.28	2.5-5.0 0.18-0.35	3.5-5.0 0.25-0.35	3.5-5.0 0.25-0.35	1.5-4.0 0.11-0.28	
Compression Set (50%)	% Max	ASTM D1056	40	30	30	25	25	20	15	15	25	
Water Absorption (Vacuum Method)	Wt%Max	ASTM D1056	5	8	5	8	8	5	5	8	8	
Water Absorption	lbs/Sq.Ft	ASTM D1667	0.1	0.1	0.1	0.1	0.1	0.1	0.1	0.1	0.1	
Heat Aging (7 Days @158 °F) Lineal Shrinkage	% Max	ASTM C548	5	5	5	5	5	5	5	5	5	5
Tensile Strength	lb/in2 kg/cm2	ASTM D412	40 3	30 2.2	55 4	40 3	50 3.5	100 7	90 6.5	100 7	55 4	40 3
Elongation	% Min	ASTM D412	300	250	250	200	230	320	350	350	180	230
Thermal Conductivity 75 °F (24 °C)	BTU.in/hr.sqft. °F Max	ASTM C117	0.25	0.25	0.25	0.27	0.27	0.31	0.31	0.31	0.29	
Specification		ASTM D1056-68 ASTM D1056-91			SCE-41 2C1	SCE-41 2C1	SCE-41 2C1	SCE-41 2C1	SCE-41 2B1	SCE-41 2B1	SCE-41 2C1	

	UNITS	TEST METHOD	NV-405S	NV-405C	NV-607S	NV-607C	NV-710S	NV-710C	NV-809S	NV-815S
Standard Sheet Size	in cm		56 x 88 142 x 224	48 x 72 120 x 182	46 x 70 116 x 177	60 x 84 150 x 213	46 x 70 116 x 177	60 x 84 150 x 213	40 x 60 100 x 150	40 x 60 100 x 150
Standard Roll Width	in cm			48 120		60 150		60 150		
Max. Gauge	in mm		1.25 30	1.25 30	1 25	1.25 30	1.125 28	1.25 30	1 25	1 25
Color (*:other colors available)			Nat/Blk	Nat/Blk*	Nat/Blk	Nat/Blk	Nat	Nat/Blk	Gray	Gray
Density (P.C.F)	lb/ft3 g/cm3		3.5-5.0 0.06-0.08	3.5-5.0 0.06-0.08	5.0-7.0 0.08-0.11	5.0-7.0 0.08-0.11	7.0-9.0 0.11-0.14	7.0-9.0 0.11-0.14	10.0-12.5 0.16-0.20	10.0-12.5 0.16-0.20
Compression Deflection (25%,Psi)	lb/in2 kg/cm2	ASTM D1056	3.0-5.0 0.21-0.35	3.0-5.0 0.21-0.35	4.0-7.0 0.28-0.49	4.0-7.0 0.28-0.49	6.0-9.0 0.42-0.63	6.0-9.0 0.42-0.63	7.5-10.5 0.53-0.74	9.0-12.5 0.63-0.84
Compression Set (50%)	% Max	ASTM D1056	20	20	15	15	15	15	15	10
Water Absorption (Vacuum Method)	Wt%Max	ASTM D1056	5	8	5	8	5	5	5	5
Water Absorption	lbs/Sq.Ft	ASTM D1667	0.1	0.1	0.1	0.1	0.1	0.1	0.1	0.1
Heat Aging (7 Days @158 °F) Lineal Shrinkage	% Max	ASTM C548	5	5	5	5	5	5	5	5
Tensile Strength	lb/in2 kg/cm2	ASTM D412	70 5	70 5	100 7	100 7	130 9	130 9	260 18.5	340 20
Elongation	% Min	ASTM D412	200	200	125	125	130	130	260	300
Thermal Conductivity 75 °F (24 °C)	BTU.in/hr.sqft. °F Max	ASTM C117								
Specification		ASTM D1056-68 ASTM D1056-91	SCE-41 2C1	SCE-41 2C1	SBE-42 2B2	SBE-42 2B2	SBE-42 2B2	SBE-42 2B2	SBE-43 2B3	SBE-43 2B3

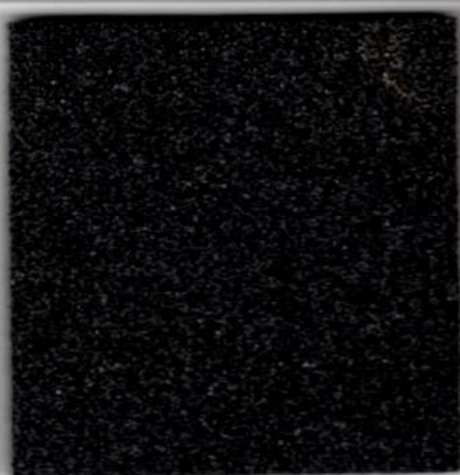


THE WINBOSS FAMILY

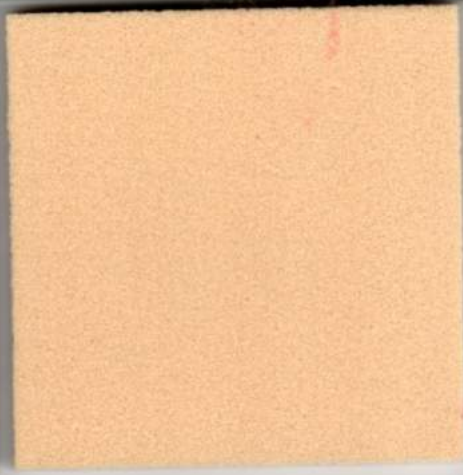
NV-405S



NV-405C



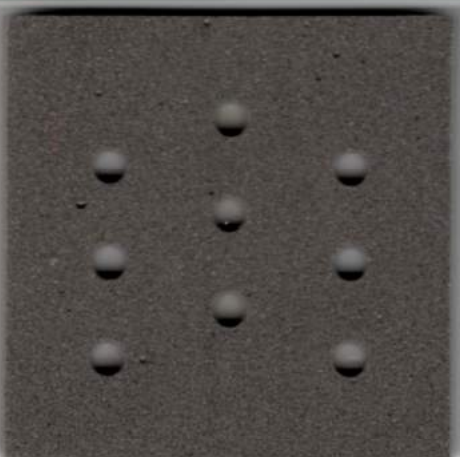
NV-607S



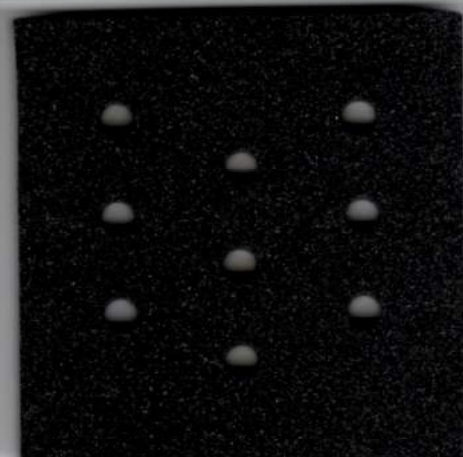
NV-710S



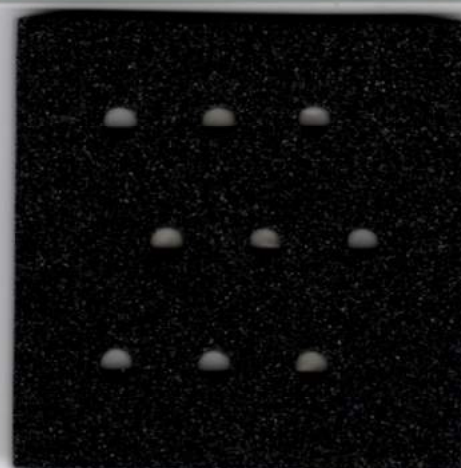
NV-810S



NV-815S



NV-825S



VS-100F



G20





THE WINBOSS FAMILY

KNV-201S



KNV-202C-2



NV-402C



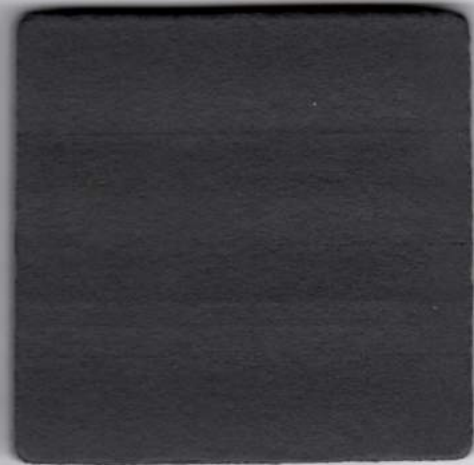
NV-403S



AP-702C



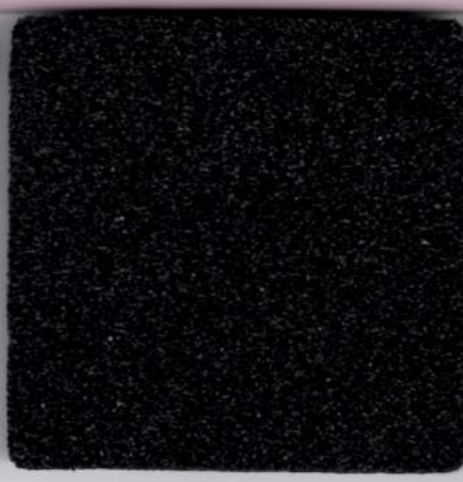
TAPE



NV-904S



NV-904C



NV-400C

